

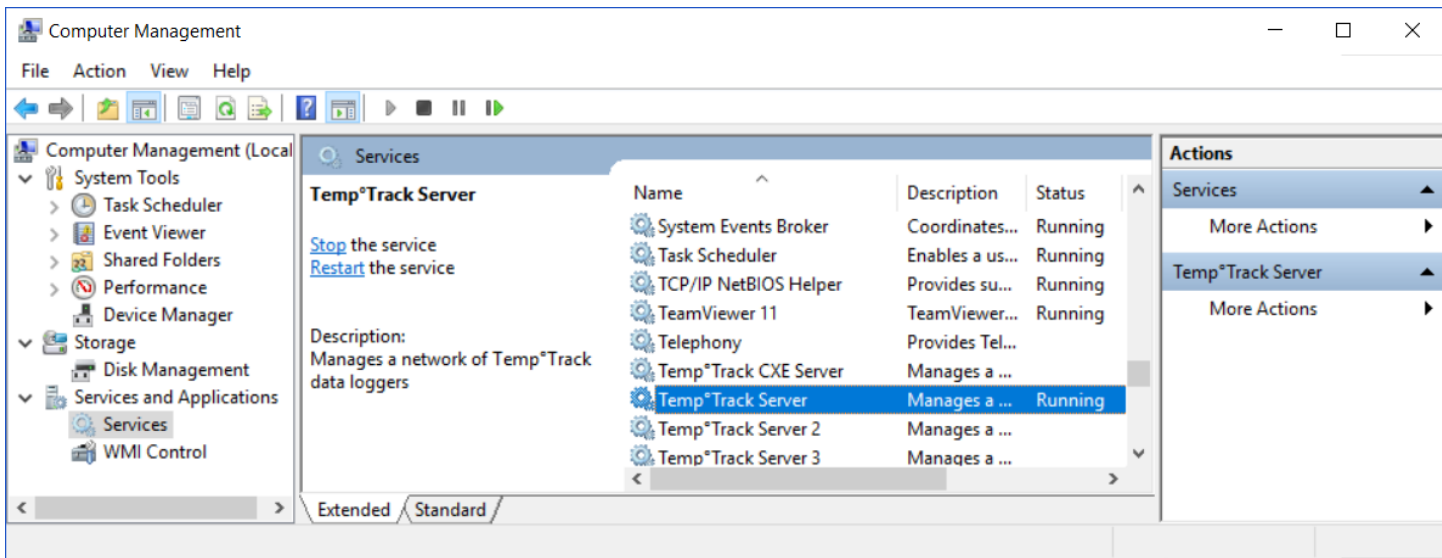
WIRELESS TEMPERATURE MONITORING SYSTEMS

1 Introduction

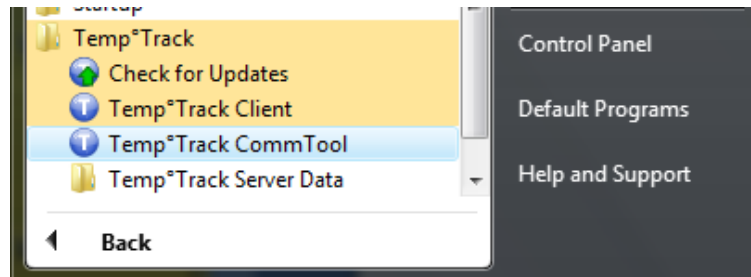
The Temp°Track™ Server data directory contains the TempTrack database and all logger configuration files. When migrating the TempTrack server software to a new machine, all old data, software licence and configuration files can be retained by copying the TempTrack server data directory to the new machine.

2 Instructions for migrating TempTrack server

1. On the existing TempTrack Server machine, stop the TempTrack Server service so that the TempTrack server shuts down and closes all relevant configuration files. Go to [Computer Management, Services](#), scroll to locate the [TempTrack Server](#) and Stop the service.



2. Locate the TempTrack server data directory and save this directory. Go to [All Programs, Temp°Track](#), and click on the shortcut to the [Temp°Track Server Data](#) directory and save this folder.



WIRELESS TEMPERATURE MONITORING SYSTEMS

3. Install the TempTrack software on the new machine. Once the software is installed, a default [TempTrack Server Data](#) directory will be installed.
4. Stop the TempTrack server on this machine and replace the default [TempTrack Server Data](#) directory with the old [TempTrack Server Data](#) directory from the old machine.
5. Start the TempTrack server now and all logger configuration and database from the old installation will now appear on this new installation.
6. Uninstall the TempTrack server software from the old TempTrack server machine. This step is critical as the old TempTrack service is scheduled to start automatically when the old machine restarts and it will proceed to seize the wireless receiver and can interfere with the new TempTrack Server installation.